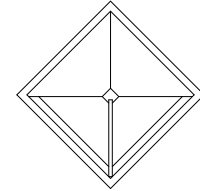


Phone: 714 668 3660
 Fax: 714 668 1107
 Email: sales@allscape.net
 http://www.allighting.com

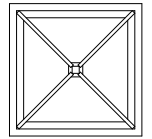
INSTALLATION SHEET

Safety, Warnings and Suggestions

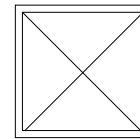
- ¹ **Care** should be taken not to position fixtures in locations where bare skin can come into contact with the potentially high temperatures on the lens.
- ² **Make** sure that electrical power is disconnected before any work is performed.
- ³ **All** gaskets and sealing surfaces must be kept clean during installation.
- ⁴ **All** wiring and installation should meet local, state and national electrical codes.
- ⁵ **Install** correct lamp type and wattage.



BL-85



BL-86



BL-87

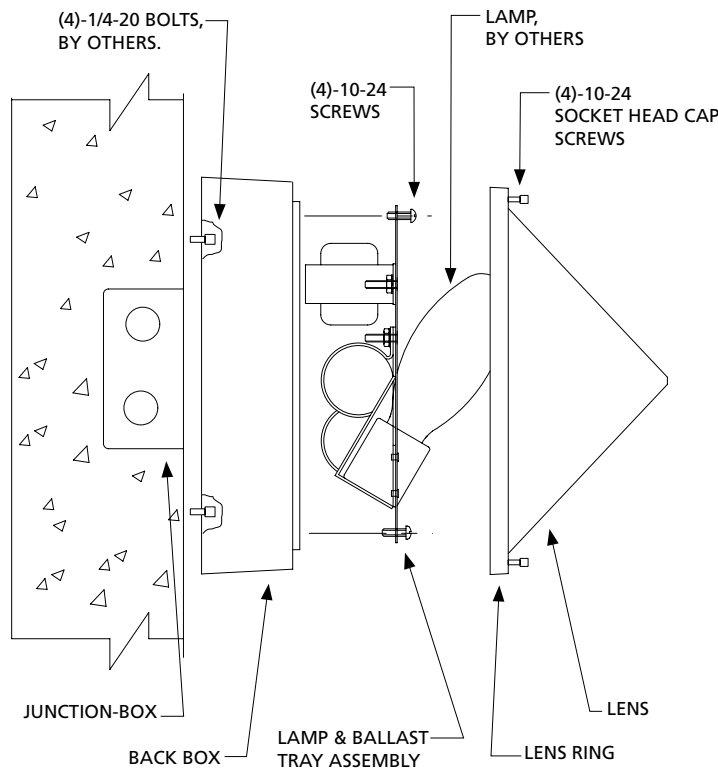


BL-89

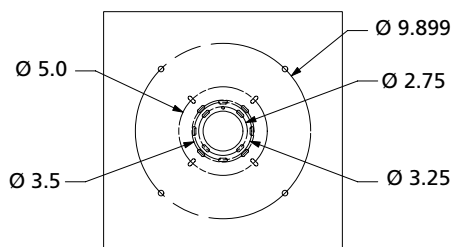
P#32A39895

© 2005 - 2009 ALLSCAPE. All rights reserved.
 ALLSCAPE is a registered trademark of Philips.

Due to a program of continuous improvement, ALLSCAPE reserves the right to make any variation in design or construction to the equipment described.



TYPICAL WALL INSTALLATION



MOUNTING DETAIL

1. Remove the fixture from the box. Remove the lens and lens frame by loosening (4)-10-24 socket head cap screws. Remove the ballast tray assembly by loosening (4)-10-24 screws.

2. Secure the back box to the wall with (4)-1/4-20 bolts or to the junction box with 8-32 screws, hardware by others. Make power and ground connection using UL approved connectors at the Junction-box (J-box by others). Reinstall the ballast tray with the (4)-10-24 screws provided (See step 3)

3. (LAMP INSTALLATION)
 Install the correct lamp type and wattage. Reinstall the lens and lens frame. Tighten the (4)-10-24 socket head cap screws.