

- Specification Grade**
- Sign Accent**
- Building Entrances**
- Doorways**
- Pedestrian Areas**
- Walkways**
- Building Accent**
- Wall Wash**



### Specifications



**Certifications** ETL and CETL listed for wet location and meets IP65 standard, dust-tight and water-jet proof.

**Fixture Housing/Knuckle** The fixture housing is constructed of heavy wall aluminum casting with a minimum 3/16" thickness. The knuckle is constructed of heavy wall die cast aluminum castings.

**Lens** Clear tempered 3/16" thick, silicone sealed to lens frame.

**Lens Frame** Cast aluminum minimum thickness of 3/16". Attached to fixture housing with two stainless steel hinge pins and two stainless steel cap screws.

**Reflectors** Spun aluminum highly specular Alzak™ finish for either type R2 spot (2H2V) or R3 flood (3H3V) distribution. Three segmented asymmetric reflectors are available, types R4 (6H7V), R5 (7H5V) and R6 (7H7V).

**Lamp Holder** Porcelain 4kv pulse rated medium base for HID sources.

**Options** Color Filter (CF), Polycarbonate Lens Shield (PL), Barndoors (BD), Grid Louver (GL), Visor (V), Fusing (F), Double Fusing (FF), Quartz Standby (QS), Photo Control Button (PCB).

**Mounting Detail** The FL-04 Knuckle is field adjustable up to 116° tilt and 360° horizontal rotation and slips over a 2-3/8" tenon. The FL-04 may be horizontal surface mounted using either the Pier Mount (PM) or Stanchion Mount (SM) options. The FL-04 may be wall or pole mounted using the Designer Wall Bracket (DWB) or Standard Wall Bracket (WBT). Call factory for custom mounting arrangements. Mounting hardware and junction box by others.

**Finish** BK-BZ-WH-GR-GY-NA thermoset polyester powder coat which is electrostatically applied and bonded by heat fusion thermosetting. CC available upon request.

PROJECT
FIXTURE TYPE
CATALOG#

 Some luminaires use fluorescent or high intensity discharge (HID) lamps that contain small amounts of mercury. Such lamps are labeled "Contains Mercury" and/or with the symbol "Hg." Lamps that contain mercury must be disposed of in accordance with local requirements. Information regarding lamp recycling and disposal can be found at [www.lamprecycle.org](http://www.lamprecycle.org)

### Product Order Guide

Series	Mounting Type	Max Watts	Lamp Type	Voltage <sup>1</sup>	Reflector Type	Finish <sup>2</sup>	Options
FL-04	K	150 MH	E17	120	R2 2H2V Spot	BK Black	CF Color Filter
		150 MH	T6	208	R3 3H3V Flood	BZ Bronze	PL Polycarbonate Lens Shield
		150 HPS	E17	240	R4 6H7V Asym	WH White	BD Barn Doors
				277	R5 7H5V Asym	GR Green	GL Grid Louver
		250 HAL	T4 <sup>3</sup>	120	R6 7H7V Asym	NA Natl Aluminum	V Visor
					GY Gray	DWB Designer Wall Bracket	
					CC Custom Color	PM Pier Mount	
						SM Stanchion Mount	
						WBT Wall Bracket with Tenon	
						JBA Junction Box 1/2" NPT Adaptor	
						F Fusing	
						FF Double Fusing	
						QS Quartz Standby	
						PCB Photo Control Button	

<sup>1</sup> Consult factory for other voltages.

<sup>2</sup> Consult factory for other finishes. Powder coat paint standard.

<sup>3</sup> T4, Clear lamp and Mini-Can Base.

Note: E17 Lamps 150W and below are medium base

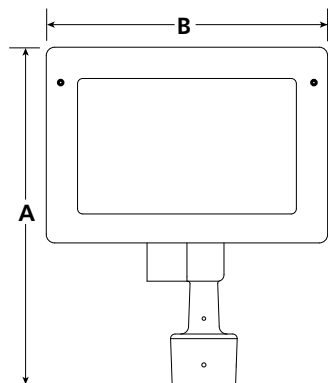
CF=single biax, CFQ=double biax, CFT=triple biax

### Example: FL-04-K-150MH-E17-277-R2-BK-DWB

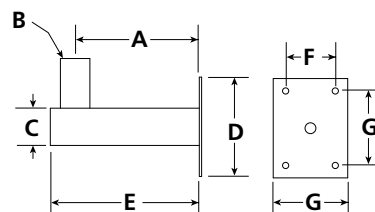
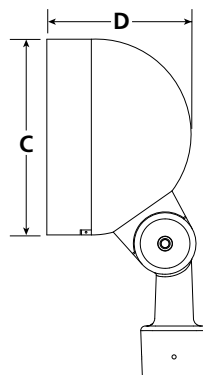
FL-04 EPA 1.17 or 0.92 at 45° Tilt

### Luminaire Dimensions

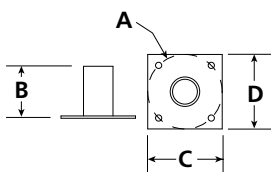
Luminaire	A		B		C		D		E		F		G		Weight	
	Inch	mm	Inch	mm	Inch	mm	Inch	mm	Inch	mm	Inch	mm	Inch	mm	lbs.	kg
FL-04-K	16.42	417	13.50	343	9.50	241	7.00	178	n/a	n/a	n/a	n/a	n/a	n/a	35	15.9
PM	6.00	152	4.00	102	6.00	152	6.00	152	n/a	n/a	n/a	n/a	n/a	n/a	3	1.4
SM	2.375	60	24.00	610	4.09	104	3.00	76	n/a	n/a	n/a	n/a	n/a	n/a	4	1.8
WBT	10.00	254	2.375	60	3.00	76	8.00	203	12.00	305	4.00	102	6.00	152	7	3.2
DWB	4.31	109	7.50	191	9.50	241	8.00	203	n/a	n/a	n/a	n/a	n/a	n/a	5	2.3



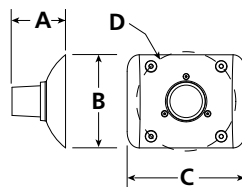
FL-04-K



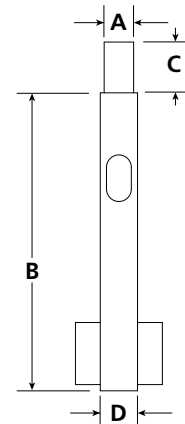
WBT



PM



DWB



SM