

**Specification Grade**

**Sign Accent**

**Building Entrances**

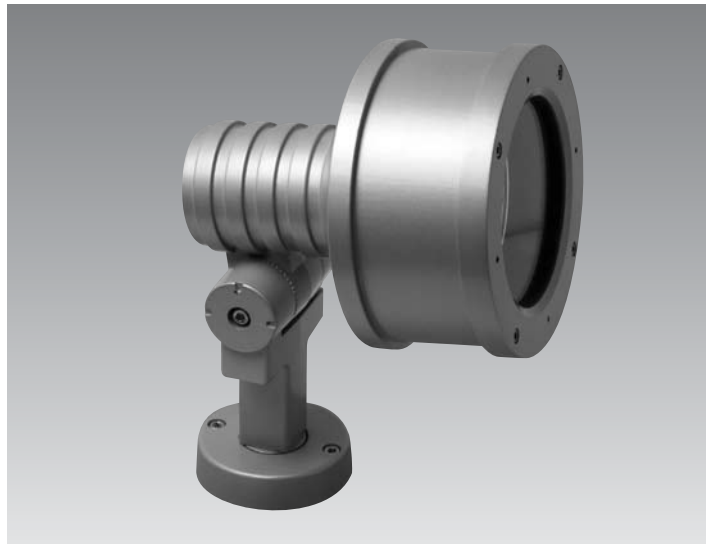
**Doorways**

**Pedestrian Areas**

**Building Accent**

**Tree Lighting**

**Landscape Areas**



CIELLO

**Specifications**



**Certifications**

ETL and CETL listed for wet location and meets IP65 standard, dust-tight and water-jet proof.

**Fixture Housing/Knuckle**

The housing and the DK (standard) and CK (optional) knuckles are constructed of die cast aluminum castings with a minimum 1/8" thickness. Both knuckles come with 1/2" NPT threads for mounting to standard junction boxes or with an additional cast swivel for mounting to the available ballast housings. The knuckles provide 142° vertical (52° down, 90° up ) and 360° horizontal adjustability.

**Lens**

Clear tempered 3/16" thick, sealed to lens frame with injection molded silicone gasket.

**Lens Frame**

Die cast aluminum minimum thickness of 1/8". Attached to fixture housing with four captive stainless steel 8-32 socket cap screws.

**Adjustable Reflectors**

Spun aluminum highly specular Alzak™ finish for either type SPT spot, FLD flood or MFLD medium flood for T6, T4 or BT5 lamps. All reflectors are provided with an adjustable external focusing mechanism.

**Lamp Holder**

Porcelain 4kv pulse rated medium base for HID and Incandescent lamp sources.

**Options**

Glass Filter (GF), Medium Visor (MV), Snoot (SN), Linear Spread Lens (LSL), Prismatic Spread Lens (PSL), Internal Hex Cell Louver (HL), Classic Knuckle (CK).

**Finish**

BK-BZ-WH-GR-GY-NA thermoset polyester powder coat which is electrostatically applied and bonded by heat fusion thermosetting. CC available upon request.

**Safety**

Caution: Care should be taken when specifying fixtures for use in pedestrian areas to avoid problems that may be caused by high lens and fixture temperatures. Consult factory for more information.

**Warning**

Caution: Care should be taken not to install in-ground and ground mounted fixtures in areas where water can stand for prolonged periods of time. Sufficient drainage must be provided to avoid problems. Consult factory for more information.

**Warning**

Caution: Care should be taken in the placement of landscape floodlights. Avoid areas where landscape maintenance equipment such as lawn mowers may come into direct contact and damage the fixture.

|                     |
|---------------------|
| <b>PROJECT</b>      |
| <b>FIXTURE TYPE</b> |
| <b>CATALOG#</b>     |

 Some luminaires use fluorescent or high intensity discharge (HID) lamps that contain small amounts of mercury. Such lamps are labeled "Contains Mercury" and/or with the symbol "Hg." Lamps that contain mercury must be disposed of in accordance with local requirements. Information regarding lamp recycling and disposal can be found at [www.lamprecycle.org](http://www.lamprecycle.org)

## Product Order Guide

| Series            | Max Watts            | Lamp Type  | Voltage <sup>1</sup> | Optics           | Finish <sup>2</sup>                                     | Options                              |
|-------------------|----------------------|------------|----------------------|------------------|---|--------------------------------------|
| FL-51             | 26CFT <sup>4,8</sup> | CFT        | 120                  | SPT (T6/T4/BT5)  | BK Black  | LSL Linear Spread Lens               |
|                   | 32CFT <sup>4,8</sup> | CFT        | 208                  | FLD (T6/T4/BT5)  | BZ Bronze   | PSL Prismatic Spread Lens            |
|                   |                      |            | 240                  | MFLD (T6/T4/BT5) | WH White  | SN <sup>7</sup> Snoot                |
|                   |                      |            | 277                  | FLD 6H6V (CFT)   | GR Green  | MV <sup>7</sup> Medium Visor         |
|                   |                      |            |                      |                  | NA Natl Aluminum  | GF Glass Color Filter                |
|                   | 20MH <sup>4,8</sup>  | BT5        |                      |                  | NA Natl Aluminum  | GF Glass Color Filter                |
|                   | 39MH <sup>4,8</sup>  | PAR20      |                      |                  | GY Gray   | HL Internal Hex Cell Louver          |
|                   | 35MH <sup>4,8</sup>  | R111       |                      |                  | CC Custom Color   | DK <sup>6</sup> Designer Knuckle     |
|                   | 39MH <sup>4</sup>    | T6         |                      |                  |   | CK Classic Knuckle                   |
|                   | 70MH <sup>4</sup>    | T6         |                      |                  |   | JBS <sup>3</sup> Junction Box Square |
| 70MH <sup>4</sup> | T4                   |            |                      |                  | JBR <sup>5,3</sup> Junction Box Round                   |                                      |
| 70MH <sup>4</sup> | PAR30                |            |                      |                  | JBR <sup>5,3</sup> Tree Mount Junction Box              |                                      |
|                   |                      |            |                      |                  | STNM <sup>3</sup> Stanchion Mount                       |                                      |
| 50INC             | PAR20                | 120        |                      |                  | RBB NEMA 3 Remote Ballast Box                           |                                      |
| 50INC             | AR111                | 120        |                      |                  | LP <sup>3</sup> Plastic Post                            |                                      |
| 75INC             | PAR30                | 120        |                      |                  | CBH Composite Ballast Housing                           |                                      |
| 75INC             | MR16                 | 120/277/12 |                      |                  | RCBH Remote CBH   |                                      |
| 100INC            | T4mini               | 120        |                      |                  | RWMS <sup>5</sup> Remote WMS                            |                                      |
|                   |                      |            |                      |                  | WMR <sup>8</sup> Wall Mount Recessed                    |                                      |
|                   |                      |            |                      |                  | WMS <sup>5,8</sup> Wall Mount Surface                   |                                      |
|                   |                      |            |                      |                  | EEBH <sup>5</sup> Electronic Elliptical Ballast Housing |                                      |
|                   |                      |            |                      |                  | UD Up/Down Mount  |                                      |
|                   |                      |            |                      |                  | CP Curved Post  |                                      |
|                   |                      |            |                      |                  | SA Straight Arm   |                                      |
|                   |                      |            |                      |                  | CA Curved Arm   |                                      |
|                   |                      |            |                      |                  | LV Low Voltage  |                                      |
|                   |                      |            |                      |                  | PL 90° Post   |                                      |
|                   |                      |            |                      |                  | DPL 90° Double Post                                     |                                      |

<sup>1</sup> Consult factory for other voltages.

<sup>2</sup> Consult factory for other finishes. Powder coat paint standard.

<sup>3</sup> Remote ballast required.

<sup>4</sup> Requires ballast enclosure.

<sup>5</sup> Specify Junction Box Mounting or Surface Conduit Connection.

<sup>6</sup> The Designer Knuckle (DK) is provided as standard.

<sup>7</sup> Care should be taken if these options are used in an up aiming orientation as debris can collect inside and obstruct the light and cause thermal problems. Consult factory for more information.

<sup>8</sup> A smaller version of the WMR and WMS is available for 39W HID and below on request.

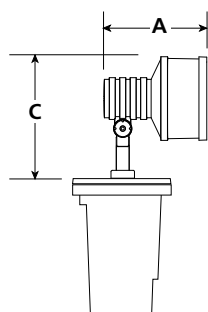
<sup>9</sup> 120/12 uses a transformer which requires a WMS or other suitable housing

CFT = triple biax

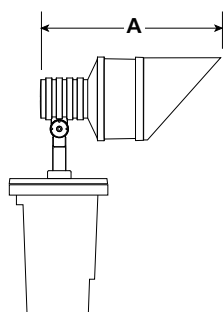
## Example: FL-51-70MH-T6-277-SPT-BK-CBH

### Luminaire Dimensions

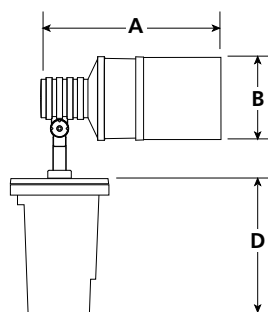
| Luminaire           | A     |     | B    |     | C     |     | D     |     | E     |     | F    |     | G    |     | Weight |      |
|---------------------|-------|-----|------|-----|-------|-----|-------|-----|-------|-----|------|-----|------|-----|--------|------|
|                     | Inch  | mm  | Inch | mm  | Inch  | mm  | Inch  | mm  | Inch  | mm  | Inch | mm  | Inch | mm  | lbs.   | kg   |
| FL-51               | 7.60  | 193 | 6.50 | 165 | 10.28 | 261 |       |     |       |     |      |     |      |     | 7.00   | 3.2  |
| FL-51-CBH           | 7.60  | 193 | 6.50 | 165 | 10.28 | 261 | 12.00 | 305 |       |     |      |     |      |     | 15.00  | 6.8  |
| FL-51-CBH-MV        | 13.13 | 336 | 6.50 | 165 | 10.28 | 261 | 12.00 | 305 |       |     |      |     |      |     | 16.00  | 7.3  |
| FL-51-CBH-SN        | 14.13 | 359 | 6.50 | 165 | 10.28 | 261 | 12.00 | 305 |       |     |      |     |      |     | 16.0   | 7.3  |
| WMS/WMR (up to 39W) |       |     |      |     |       |     |       |     | 6.38  | 162 |      |     | 3.50 | 89  | 12.50  | 5.7  |
| WMS/WMR (up to 70W) |       |     |      |     |       |     |       |     | 9.00  | 228 |      |     | 5.00 | 127 | 12.50  | 5.7  |
| EEBH                |       |     |      |     |       |     |       |     | 5.54  | 141 | 8.00 | 204 | 2.55 | 65  | 7.00   | 3.1  |
| FL-51-UD            | 16.25 | 413 |      |     | 10.28 | 261 |       |     | 10.38 | 264 | 6.00 | 152 | 3.50 | 89  | 24.00  | 10.9 |



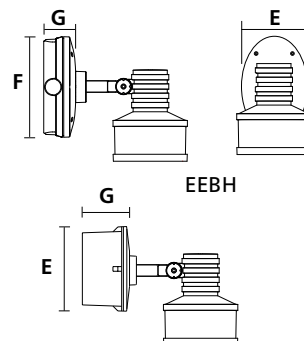
FL-51-CBH



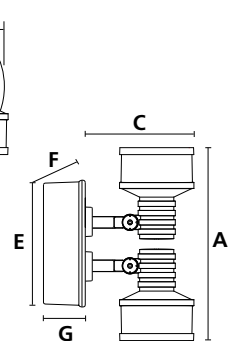
FL-51-CBH-MV



FL-51-CBH-SN



WMS/WMR



UD