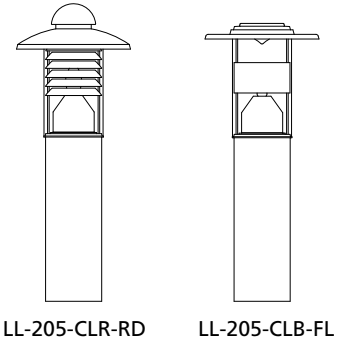


Phone: 714 668 3660
 Fax: 714 668 1107
 Email: sales@allscape.net
 http://www.allighting.com

INSTALLATION SHEET

Safety, Warnings and Suggestions

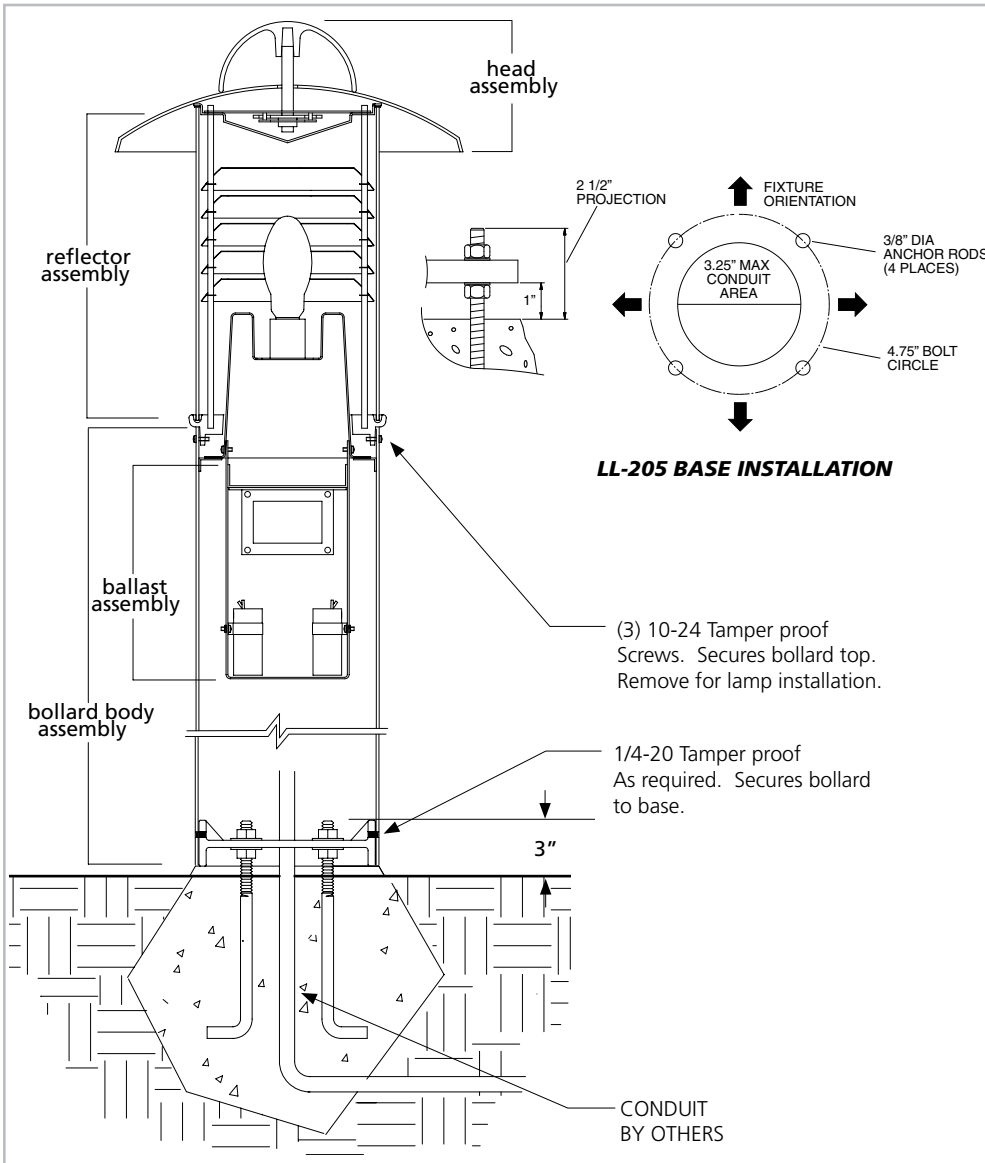
- 1 **Care** should be taken not to position fixtures in locations where bare skin can come into contact with the potentially high temperatures on the lens.
- 2 **Avoid** installing fixtures in locations where water collects and stands for prolonged periods.
- 3 **Make** sure that electrical power is disconnected before any work is performed.
- 4 **All** gaskets and sealing surfaces must be kept clean during installation.
- 5 **All** wiring and installation should meet local, state and national electrical codes.
- 6 **Install** correct lamp type and wattage.



P#32A42714

© 2005 - 2009 ALLSCAPE. All rights reserved.
 ALLSCAPE is a registered trademark of Philips.

Due to a program of continuous improvement, ALLSCAPE reserves the right to make any variation in design or construction to the equipment described.



1. Prepare the site with adequate excavation and install the anchor bolts as per factory supplied template.
 2. Remove the bollard from base by removing (securing screws). Install the base to anchor bolts and level.
 3. Remove the reflector assembly and the lens from the fixture housing by loosening the (3) side mount 10-24 socket cap truss head security screws.
 4. Make power and ground connection using UL approved connectors. At this time install the lamp.
 5. Take the bollard body assembly and install over the cast base and secure the body with the 1/4-20 tamper proof screws.
 6. Replace the lens and the reflector assembly and secure with the (3) 10-24 security screws.
- NOTE: MAKE SURE BEFORE INSTALLING THE LENS, THAT THE GASKET IS PROPERLY SEATED.**
7. Place separately packed shade over all-thread and screw down top casting until hand tight.