

## Restricted Depth Applications

### Interior Applications

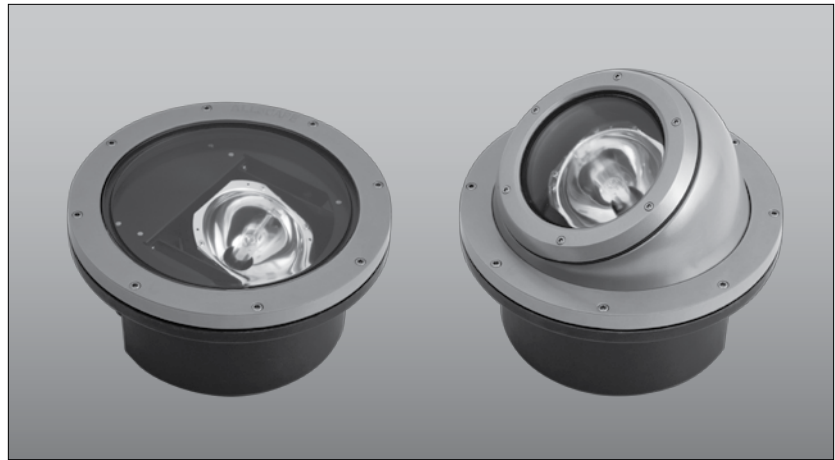
### Landscape Areas

### Building Accent

### Pedestrian Areas

### Driveway Marker

### Sign Lighting



SL-42

SL-42-PH

## Specifications



### Certifications

ETL and CETL listed for wet location, direct burial, concrete pour and is also listed for indoor usage. Certified to IP65 and IP67 to ensure protection against the harshest environments. IEC compliant versions available, consult factory.

### Lamp/Ballast Housing

Compression molded Rhinolite™ composite material, structurally reinforced with glass fibers. Superior resistance to ultraviolet degradation and corrosion resistant in harsh environments. Trim Rng (TR) and Debris Cover (DC) supplied standard.

### Splice Compartment

Supplied with two 3/4" NPT conduit entrances. Connection to ballast compartment by way of anti-wicking chamber. Sealed with gasketed die cast aluminum cover plate. Suitable for through wiring.

### Lens

Standard 7/16" clear tempered flat borosilicate glass (F) or ADA anti-slip and walkover clear tempered flat borosilicate glass (ADA). Flat lenses will withstand loads up to 200 PSI. Sealed to housing with high temperature injection molded silicone gasket. Optional linear and radial spread lenses also available.

### Lens Frame

Heavy duty die cast bronze lens frame is supplied as standard. Fastened to housing with eight captive 1/4-20 stainless steel allen cap screws.

### Reflectors

Spun aluminum highly specular Alzak™ finish for either NEMA type 1, or 2 spot (SPT) or NEMA type 3 or 5 flood (FLD) distributions. Field adjustable up to 25° tilt and +/- 45° horizontal rotation.

### Lamp Holder

Porcelain 4kv pulse rated for HID lamp sources.

### Options

Cast aluminum Convex Rock Guard (CR), Directional Shield (DS), and Driveway Marker (DM). Internal Hex Cell Louver (HL), Glass Color Filter (GF), Grout Mask (GM), Debris Cover (DC), Die cast bronze Port Hole (PH).

### Finish

Housing Black (BK). Options can be painted in standard or custom colors. Powder Coat Standard.

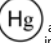
### Safety

Caution: Care should be taken when specifying fixtures for use in pedestrian walkways to avoid problems that may be caused by high lens temperatures. Consult factory for more information.

### Warning

Caution: Care should be taken not to install in-ground fixtures in areas where water can stand for prolonged periods of time. Sufficient drainage must be provided to avoid problems. Consult factory for more information.

<b>PROJECT</b>
<b>FIXTURE TYPE</b>
<b>CATALOG#</b>

 Some luminaires use fluorescent or high intensity discharge (HID) lamps that contain small amounts of mercury. Such lamps are labeled "Contains Mercury" and/or with the symbol "Hg." Lamps that contain mercury must be disposed of in accordance with local requirements. Information regarding lamp recycling and disposal can be found at [www.lamprecycle.org](http://www.lamprecycle.org)

## Product Order Guide

Series	Max Watts	Lamp Type	Voltage <sup>8</sup>	Optics	Lens	Finish <sup>9</sup>	Options
SL-42	<b>Fluorescent</b>						
	26CFT	CFT	120	FL <sup>1</sup>	Fluorescent F <sup>1</sup>	Clear Flat	BK <sup>5</sup> Black
	32CFT <sup>2</sup>	CFT	208	FL <sup>1</sup>	Fluorescent ADA <sup>1</sup>	ADA Walkover	BZ <sup>5</sup> Bronze
	42CFT <sup>2</sup>	CFT	240	FL <sup>1</sup>	Fluorescent LS <sup>1</sup>	Linear Spread	WH <sup>5</sup> White
			277	SPT <sup>1</sup>	Spot RS <sup>1</sup>	Radial Spread	GR <sup>5</sup> Green
	<b>Metal Halide</b>						
	39MH	T4	120	NFLD <sup>1</sup>	Flood		NA <sup>5</sup> Natural Aluminum
	39MH	T6	120/277	MFLD <sup>1</sup>	Flood		GY <sup>5</sup> Gray
	20MH	BT5					CC <sup>5</sup> Custom Color
	20MH	T4					
	20MH	HID-MR16 <sup>10</sup>					
	39MHmax	Par20 <sup>10</sup>					
	39MHmax	R111 <sup>10</sup>					

### THESE SELECTIONS PORTHOLE ONLY

39MH <sup>3</sup>	Par20	PHSPT	Porthole Spot <sup>3</sup>
70MH <sup>3</sup>	T6	PHFLD	Porthole Flood <sup>3</sup>
70MH <sup>3</sup>	T4	PHFL	Porthole Fluorescent <sup>3</sup>
70MH <sup>3</sup>	Par30		
70MH <sup>3</sup>	R111		

### Incandescent

75max MR16<sup>10</sup>

### LED<sup>12</sup>

1X5WLED CUS 120 10,30,45 White (WW - 3050K, DW - 4700K)

<sup>1</sup> These selections are not available with the PH Porthole option.

<sup>2</sup> 26 CFT max for Porthole. Comes with wall wash lens on non-Porthole versions.

<sup>3</sup> Porthole Only.

<sup>4</sup> The DM Driveway Marker is limited to MR16 and HID-MR16 flood lamps.

<sup>5</sup> Powder coat paint standard.

<sup>6</sup> The PH Porthole option is supplied as standard in sandblasted bronze.

<sup>7</sup> These options are supplied in heavy wall cast aluminum.

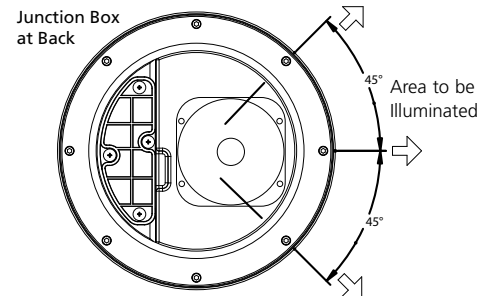
<sup>8</sup> Consult factory for other voltages.

<sup>9</sup> Consult factory for other finishes.

<sup>10</sup> Does not require internal optics.

<sup>11</sup> The IGS works with the T6, T4 and BT5 lamp types only.

<sup>12</sup> The CUS version uses a 5W Atlas from Lamina.



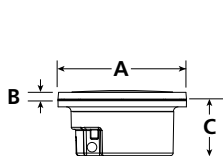
SL-42 Aiming Direction

Note: CFT = triple biax

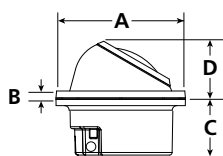
## Example: SL-42-39MH-T6-277-SPT-F-DS-BK

### Luminaire Dimensions

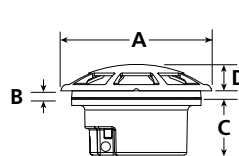
Luminaire	A		B		C		D		Weight	
	Inch	mm	Inch	mm	Inch	mm	Inch	mm	lbs.	kg
SL-42-F	12.25	311	0.80	20	5.10	130	N/A	N/A	15	6.8
SL-42-PH	12.25	311	0.80	20	5.10	130	5.50	140	22	10.0
SL-42-DM	14.30	363	0.80	20	5.10	130	2.50	64	23	10.4
SL-42-CR	12.25	311	0.80	20	5.10	130	1.20	30	16	7.3
SL-42-DS	12.25	311	0.80	20	5.10	130	4.20	107	17	7.7



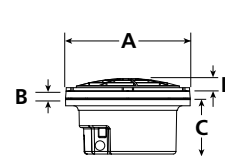
SL-42-F



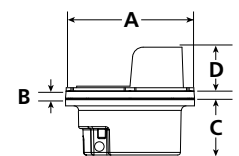
SL-42-PH



SL-42-DM



SL-42-CR



SL-42-DS